



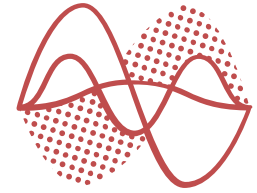
Aarca Research

Case Study

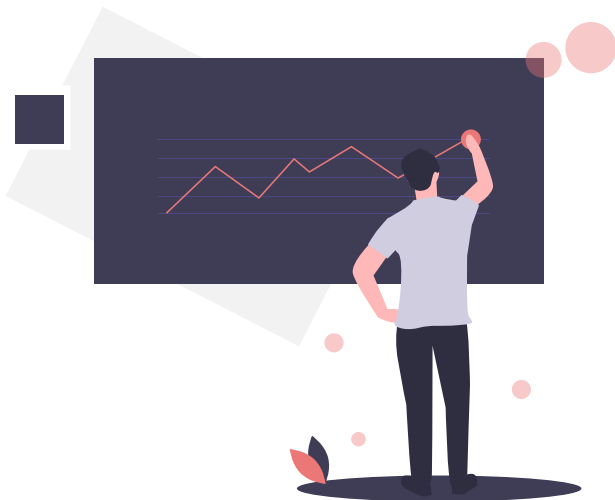
*How a manufacturing company saved time
and money while delivering health to employees*

Case Study

How a manufacturing company saved time and money while delivering health to employees



Aarca Research



Overview

- A German MNC which specializes in pumps and heavy-duty valves, with offices in more than 100 companies is looking for a preventive healthcare solution as part of employee wellness program.
- In India, as per the factories act, it is mandatory to get the employee's health check done every year. The same can be arranged by an employee visiting the hospital on their own or the hospital can hold a camp at the employer's premises. The first option results in loss of man-days impacting the production cycle. The latter option is a logistical challenge including travel for a team of doctors, equipment for drawing, storing, and transporting the blood. The cost of such a medical camp would cost USD 15 on average per employee. Also, the company needs to wait for days for the result from the lab.
- When Aarca Research approached the client team, they agreed and facilitated for a camp. Our product, IHRA is a single touchpoint, easy to use, portable solution for preventive healthcare screenings. It provides individual comorbidity risk assessment report. The time it takes to provide the report is an average of 5 minutes per employee. Aarca research team was able to complete a health camp for 150 people in a day for 1/3 of the cost of the traditional tests.

The Below Results Were Achieved

- ✓ Reduction of preventive healthcare costs per employee by 75%
- ✓ 22% of the employee population has been notified of their chronic disease risk, which would be missed in the case of traditional diagnostic tests.
- ✓ As estimated 5 man-days were saved.
- ✓ Provided live reporting
- ✓ As the next steps, the company appointed medical officer perused each risk assessment report, and gave medical advice to those employees who had a higher risk.



A point of care solution for non-invasive diagnosis of chronic conditions